

Pianola User Guide for Club Members

How to analyse your own results and find a partner with Pianola

Contents

Introduction

Results

Pianola Plus

Bidding accuracy

Card play

Session report

Interpreting the charts

Summary table

Pianola Replay

Competitions

Members

Partner Finder

Other options

Admin area

Change club

My account

Introduction

Pianola is a tool to help club owners and managers to run bridge clubs, but it also gives club players - like you - new ways to analyse your results and find partners.

Pianola gives you a personalised history of your own results with your average score over time, and with each the different partners with whom you play.

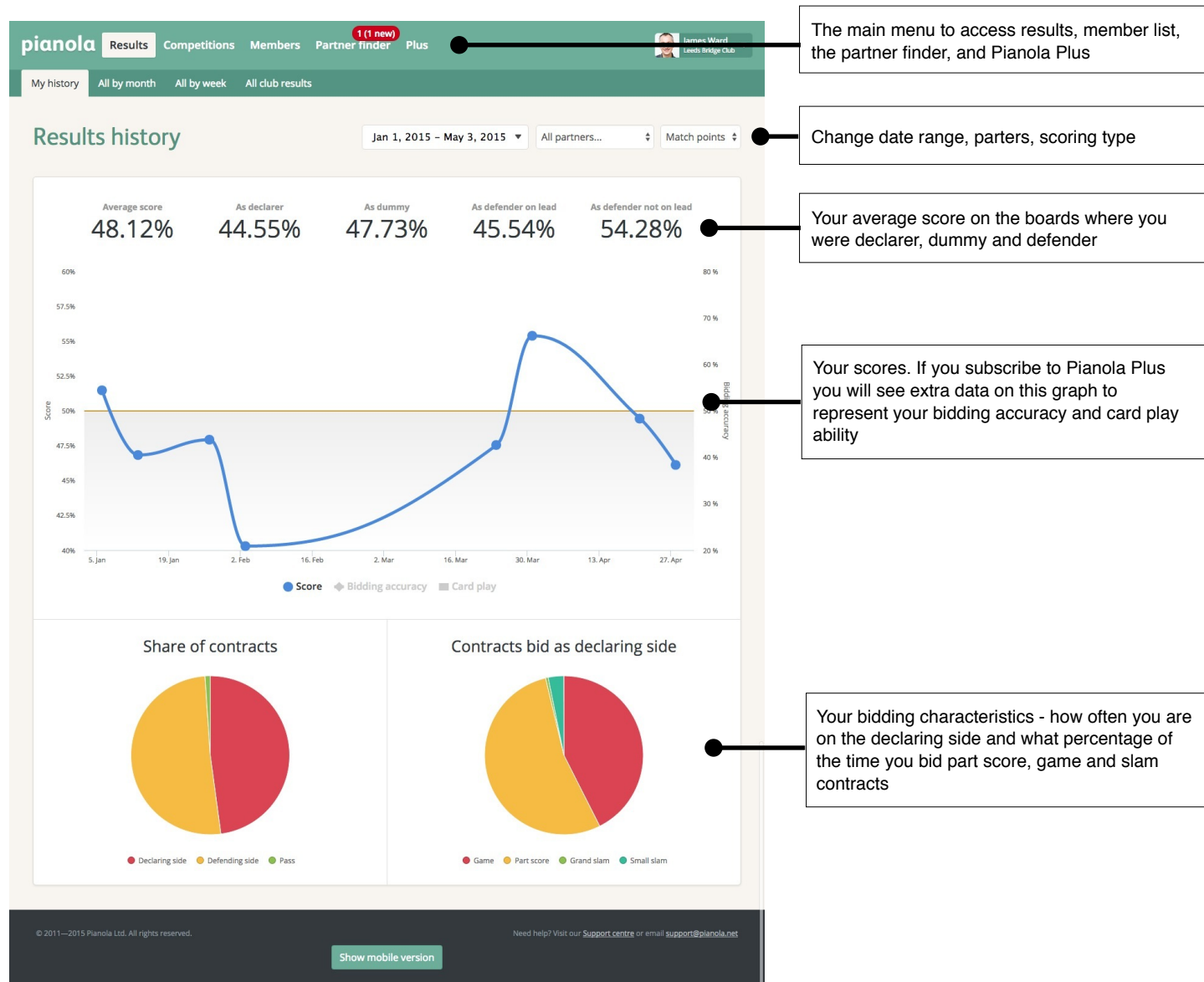
We also calculate what is your average on all the boards where you were declarer, dummy, defender-on-lead and defender-not-on-lead and show you these statistics as an average over time and on a game-by-game basis.

You can also get analysis of your bidding accuracy and card play ability by subscribing to Pianola Plus, an optional upgrade. When you're a Pianola Plus subscriber you can also play hands again with card-by-card guidance about how to achieve the most tricks possible.

Thank you for using Pianola. If you have any questions that aren't covered in this guide, or have any suggestions please contact us by emailing support@pianola.net.

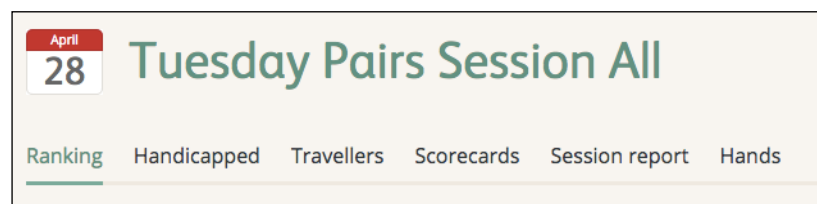
Results

The first page shows you a graph of all your most recent games (in the past three months).



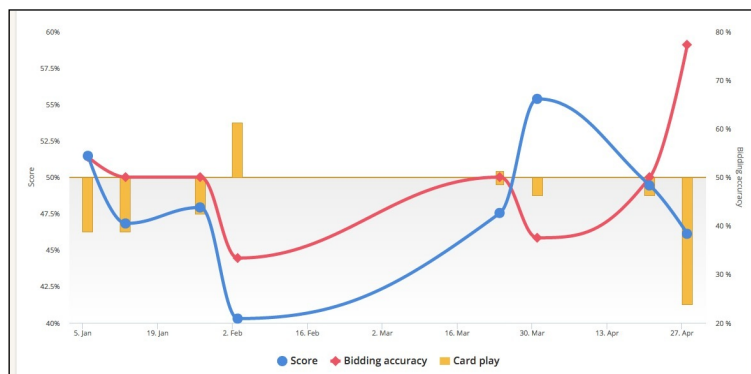
You can see your averages over different time periods, with each of your partners and for different scoring methods (matchpoints, VPs, IMPs).

Click on a game on the graph to view those results. For each game, there is a screen for rankings, travellers, scorecards, session report, and hands.



Pianola Plus

Pianola Plus is a set of additional analysis tools that you can add to your account. They give you analysis of your bidding and card play, and provide you with a tool to replay hands with card-by-card guidance. When you have Pianola Plus you will see additional data on the results history graph. These show your bidding accuracy and card play in comparison to the double dummy (or makable contracts), which is the theoretical optimum result for any given board.



Bidding accuracy

For both sides - declarer and defender - Pianola will assess whether or not the pairs bid to the right level, taking into account their vulnerability and whether there was a profitable sacrifice available.

This is represented by the red line of the graph. The bidding accuracy does not take into account how many tricks you actually won. It looks purely at whether you were playing in a good spot.

Example

On this board, vulnerable EW can make 4H with an overtrick to score 650.

However, non-vulnerable NS can afford to bid to 6CX, which would score -500 when they go off by three tricks as expected. This is cheaper than allowing EW to make their game contract in hearts.

In actual fact, the optimal contract (or par) on this hand is EW bidding 6HX-1 to score 200. This is because neither side has a bid available to them that can improve on this score.

North		D NV	
♠	10 9 7	♠	3 2
♥	9 5 4	♥	A K Q 8 3
♦	Q 10 2	♦	K 9 8 4 3
♣	A Q 9 6	♣	4
West		East	
♠	K Q 5 4	♠	3 2
♥	J 10 7 6 2	♥	A K Q 8 3
♦	A	♦	K 9 8 4 3
♣	8 3 2	♣	4
South		NV	
♠	A J 8 6	♠	3 2
♥	J 7 6 5	♥	A K Q 8 3
♦	J 7 6 5	♦	K 9 8 4 3
♣	K J 10 7 5	♣	4
		HCPs	
		8 10 12 10	
		NT	
North	3	-	-
South	3	-	-
East	-	1	5
West	-	1	5

Card play

The yellow bars on the results history graph show you how many tricks you won above or below what you were expected to, according to the double dummy. This statistic ignores whether you were in a 'good' contract or not. It simply compares how many tricks you won as declarer or defender to how many tricks you should have won when playing in that denomination.

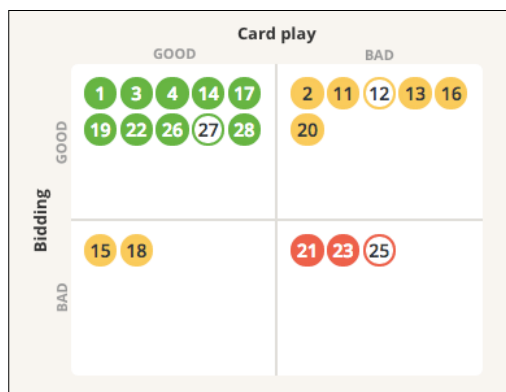
In the example above, if NS bid 6CX and go off by three tricks, Pianola will report that they made all the tricks they were expected to - i.e. good card play. If they only go off by two tricks, Pianola will say that they made an extra trick over the expectation (and that EW made one trick fewer than they should have done).

The session report gives you a complete breakdown of the game.

Board-by-board breakdown of your score, bid, and analysis

Interpreting the charts

Pianola Plus provides three charts for your bidding accuracy and card play. The first chart shows your boards divided into four areas. When Pianola says “good” or “bad” it is only in comparison to the double dummy - it’s not making value judgements about your game.



- The top left quadrant are the boards you bid well and played well
- The top right are the boards you bid well but played badly.
- Bottom left are the boards your bid badly but played well
- Bottom right are the boards where both the bidding and the card play were wrong

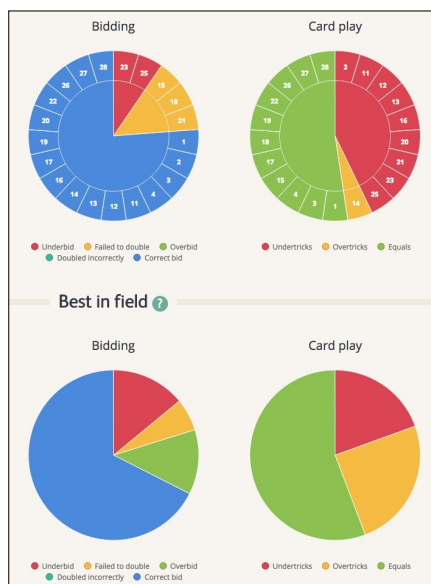
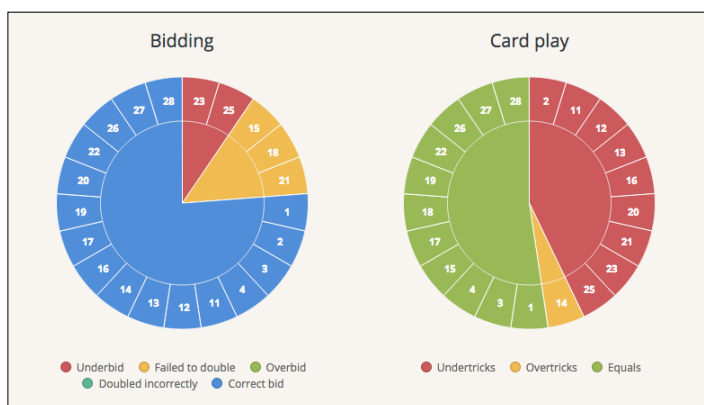
The next two charts show your bidding and card play for each board.

Bidding

We show you for each board whether you bid “correctly” (ie in line with the double dummy) or whether you underbid, overbid, failed to double, or doubled incorrectly.

Card play

For each board, we show you whether you made all the tricks you were entitled to or whether you made more or fewer than you should. This is compared to the double dummy analysis for the suit in which the contract was played and provides data whether you were declarer or defender. So if the double dummy says NS can make 2S, they are expected to make eight tricks (even if they bid higher or lower) and their opponents are expected to make five tricks.



Best in field

This data is only useful in the context of the best in field.

In this example that my partner and I bid better than the best in field (the blue section of the left hand pie chart).

However, it’s our card play with was significantly worse and the reason we got a poor score. The best in field made extra tricks on far more boards than my partner and I did.

Remember - these are extra tricks compared to the double dummy - not compared to the contract they were in.

Summary table

In the table at the bottom, you will see a board-by-board breakdown of each hand. It shows the score, the bid and actual result, the frequency of that bid, the bidding analysis, card play analysis, and the role you took on that board.

Filter by

All roles

 ?

Board	Score	Bid	By	Bidding			Card play										
				Result	Freq	Assessment	-3	-2	-1	=	+1	+2	+3	+4	+5	+6	+7
12	0%	3NT	N	-1	1/11	Well bid			-1								Dummy
2	10%	4♥	W	+1	7/11	Well bid			-1								Defender not on lead
3	15%	6NT	E	+1	4/11	Well bid											Defender on lead

Hover your mouse over the bidding analysis to see the bidding assessment

Click a row to view the full traveller

Click a column header to sort by board number or by score

Use the filter menu to show boards where you were in a specific role

Filter by

All roles

All roles except dummy

Declarer

Dummy

Defender on Lead

Defender not on Lead

Board

Score

Bid

By

Result

Freq

Assessment

-3

-2

-1

=

+1

+2

+3

+4

+5

+6

+7

Pianola Replay

Ever wondered how to make the extra tricks that other people took? Can't see how to make the contract that the hand record says you should? Pianola Replay will show you. It lets you play any again, with card-by-card guidance.

To launch it, click the "Replay this hand" button that you'll see alongside every hand record. The hand will open up with the contract that was played at your table.



Turn guidance on or off

Contract (click pencil to change)

The labels on the cards show the outcome for the contract of each card played, assuming best play from that point on. So in this example, the opening leader will either set the contract or give declarer up to two overtricks, depending on their choice of lead.



You don't play the hand against the computer. Instead, you play all four hands and can choose to follow the advice or ignore it so you can see how the whole hand plays out. Regular use of Pianola Replay will help you understand how to play the hands better.

Competitions

If your club uses Pianola to calculate the results of any competitions, you will see those listed here.

Active

Start date	End date	Name	Type	Gender	Handicap
No active competitions					

Completed

Start date	End date	Name	Type	Gender	Handicap
01 Sep 2014	30 Apr 2015	Championship Pairs 2014-15	Pair	Any	No
01 Sep 2014	30 Apr 2015	Championship Pairs 2014-15 (handicapped)	Pair	Any	Yes

© 2011–2015 Pianola Ltd. All rights reserved. Need help? Visit our [Support centre](#) or email [support@pianola.net](#)

Show mobile version

Members

The members page is a list of all the members of your club. Find a member by typing a name in the search box at the top.

Click on a member's listing to see more information about them. What you can see will depend on how much they have chosen to share. Each member can choose whether or not to share their contact information and / or the results history. They may also add information about their preferred system, a biography and a photo.

Start typing to search members...

First name	Last name	Preferred system	NGS grade	NGS band	Ranking
Pamela	Adler	Standard English Acol	41.76%	Four	Club Master
Sandra	Andrews	Benji Acol	50.32%	Eight	1 Star Master
Eileen	Armstrong	-	51.79%	Nine	Advanced Master
Dan	Ash	-	50.05%	Eight	District Master
Hilary	Asoko	-	47.30%	Seven	District Master
Alan	Barnett	Reverse Benji Acol	55.75%	Jack	Advanced Master
Jeremy	Barton	-	-	-	Unranked
Olga	Barttram	-	47.41%	Seven	Advanced Master
Alan	Benstock	-	40.30%	Three	Unranked
Barbara	Berson	-	48.18%	Seven	Area Master
Stephen	Berson	-	56.71%	Jack	Master
Pranjit	Bhattacharya	Standard English Acol	52.19%	Nine	Area Master
Ann	Blins	-	-	-	Unranked
Jim	Blins	-	-	-	Unranked
Geoffrey	Birks	Weak twos in three suits	-	-	Unranked

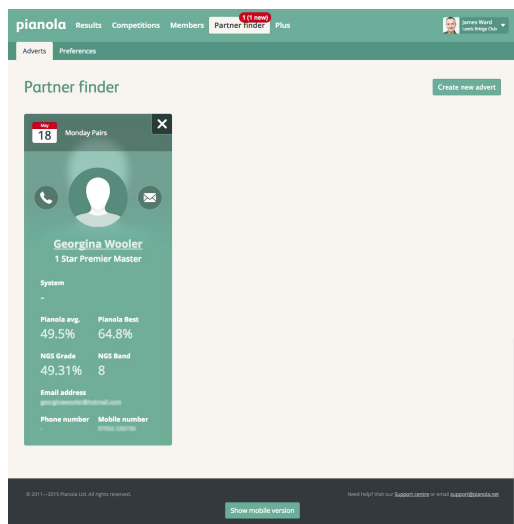
First Previous 1 to 15 of 323 rows Next Last 15

© 2011–2015 Pianola Ltd. All rights reserved. Need help? Visit our [Support centre](#) or email [support@pianola.net](#)

Show mobile version

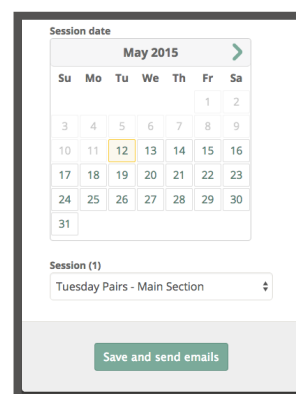
Partner Finder

You can see who's looking for a partner and create an advert for yourself when you need a partner. This number shows how many people are looking for a partner and how many are new since you last looked.

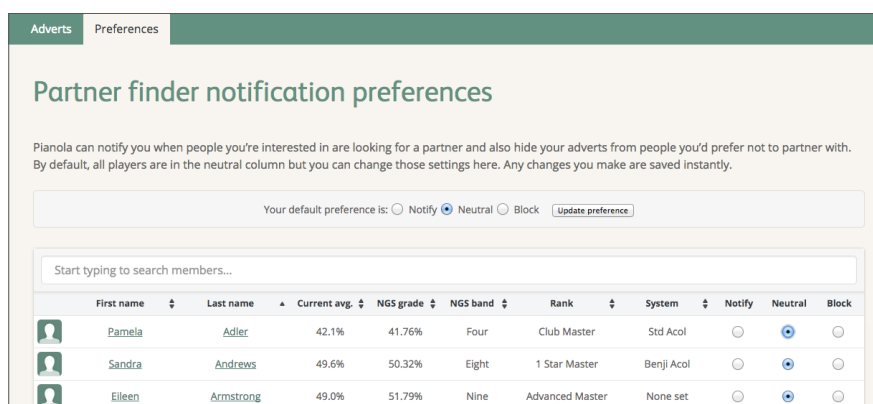


If you see someone you'd like to play with, send them an email or give them a call using the contact details shown on their advert.

If you'd like to post and advert yourself, click on the 'Create new advert' button. A pop-up window will appear. Click on the date you want and then select from the games available on that day (if there's more than one). When you're done, click 'Save and send emails'. This will send an email notification to anyone who's opted-in to receive them.



Click on the 'Preferences' link to select who can see your adverts. You can choose the default setting and then make individual selections for specific players:



Notify: means you will receive an email when this player is looking for a partner

Neutral: means you will not receive an email but they will be able to see any adverts you post

Block: means this player will not see any adverts you post

Other options

Admin area

If your club has given you admin permissions (say, to upload results) you will see a link here to go to the admin area. If you do not have any admin rights you won't see a link here.

Change club

This screen allows you to switch between results at other clubs that use Pianola.

My account

My account is where you can add extra information about yourself, as well as choose how much information to share with other members of your bridge club.

Personal details

Your membership number(s), name, address and phone numbers. You can also edit your username and password on this page.

It will help the administrators of your bridge club if you keep these details up-to-date, especially your email address as they will send you news and information by email in the future.

Bridge details

Your preferred system as well as any other systems you play. (Please email support@pianola.net if you play a system that's not listed here and we'll add it.)

You can also add a short biography about your bridge playing history so other members know a little more about you.

Photo

Upload a photo from your computer by clicking on the 'Browse' or 'Choose file' button. This photo will be displayed on your profile and in the members list.

Communication preferences

Your club may have created some opt-in email lists. If you would like to receive information aimed at these groups, tick the box and click Save.

Privacy

You can choose whether or not to share your contact details and / or your results history. Click the box next to each option and click Save.

